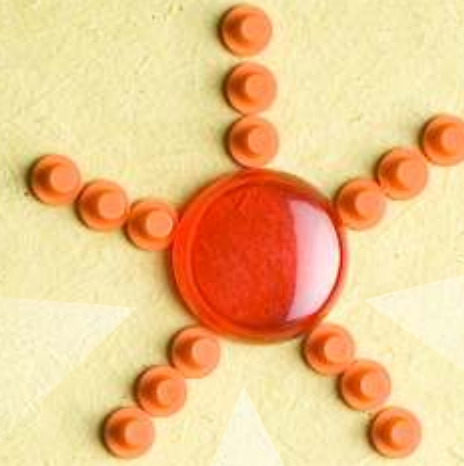


Inspired By a Greener planet



Responsible Engineering



Protecting the earth's ecosystem is one of the biggest challenges that mankind faces today. As world citizens, it is our collective responsibility to safeguard this natural legacy.

At GIC and ESBEE, we wholeheartedly contribute to the protection of human health and the environment - because we believe that our future generations should inherit a cleaner, greener planet.

Active environmental protection thus forms an integral part of all areas of our business. Processes at our facility are streamlined towards eliminating or minimizing the content of harmful carcinogenic substances, eventually to make products that adhere to the Latest Product Reference Standards. Indeed, all GIC and ESBEE products are CE Certified and RoHS compliant.

Mould design is another thrust area for eco conservation. By creating new moulds ingeniously, we lessen the wastage of plastic appreciably.

Across the organization, in thought and in action, we make a conscious effort to reduce our carbon footprint.



GIC and ESBEE: A saga of technovation

As the saying goes, the journey of a thousand miles begins with a single step.

General Industrial Controls Private Limited (GIC) started operations in 1972 as a manufacturer of Electronic Control and Timing devices. Though the beginnings were modest, the passion to excel and succeed was overwhelming.

Capacity expansion, fuelled by ever increasing product demands, has resulted in growth that has surpassed expectations.

Today, we are an ISO 9001:2008, TS 16949 certified organization with a state-of-the-art plant having integrated facilities for everything from 'design to delivery' under one roof.

Our high performance products for Process Control and Automation applications, together with our ingenious Tooling solutions, are finding a growing acceptance worldwide.

Our product categories include - 1) Lighting Automation: Time Switches and Light Energy Management Systems, 2) Process Control: Mini PLCs, Timers, PID Temperature Controllers, 3) Low Voltage Protection and Switchgear: Voltage Protection, Frequency, Thermistor & Earth Leakage Relays 4) Instrumentation: Hour Meters, Impulse Counters and 5) Injection Moulded Plastic Components for various applications.

ESBEE Industrial Combines is engaged in the manufacture of an extensive range of products catering to the needs of the general engineering as well as white goods industry.

The industrial range of products includes 22.5 mm Push Button, Signaling Units, Tower lights, Push Button Stations, Synchronous Motors and Industrial Fuses. Whereas the white goods industry range of products includes Appliance Switches, Lamp Sockets, Miniature Switch and Wire Harnesses.

Ours is an ISO 9001:2008 certified company having international approvals like CE, CSA, VDE, UL, "S" mark (for 22.5mm Push Buttons and Signaling Units) and CSA, TUV (for Appliance Switches and Lamp Sockets.) As part of our quality management practices, we do continuous in-house endurance testing, which ensures a high degree of reliability.

At GIC and ESBEE, we strongly feel that Indian products find a place of pride in the global milieu. And by making export quality products, we successfully meet the needs of prestigious clients all over the world.



Belief

We understand that how our clients perceive us hinges on what experience we deliver as a Brand.

We focus on bringing tangible value to customers through an unrelenting dedication to product quality, service and cost control. In the process, we have built enduring relationships, many of which transcend business boundaries.

Product Engineering

A team of talented engineers pooled from various disciplines including Computer, Electronics, Instrumentation, Polymer and Tool engineering, work together to draw up blueprints for innovative products. Their task is to design products that would be safe, eco-friendly, reliable and durable.

Tool Design & Development

Imaginative and experienced, our Design & Manufacturing colleagues use cutting-edge technologies including Solid Edge, Catia and Unigraphics for developing highly precise components matching international style and quality.

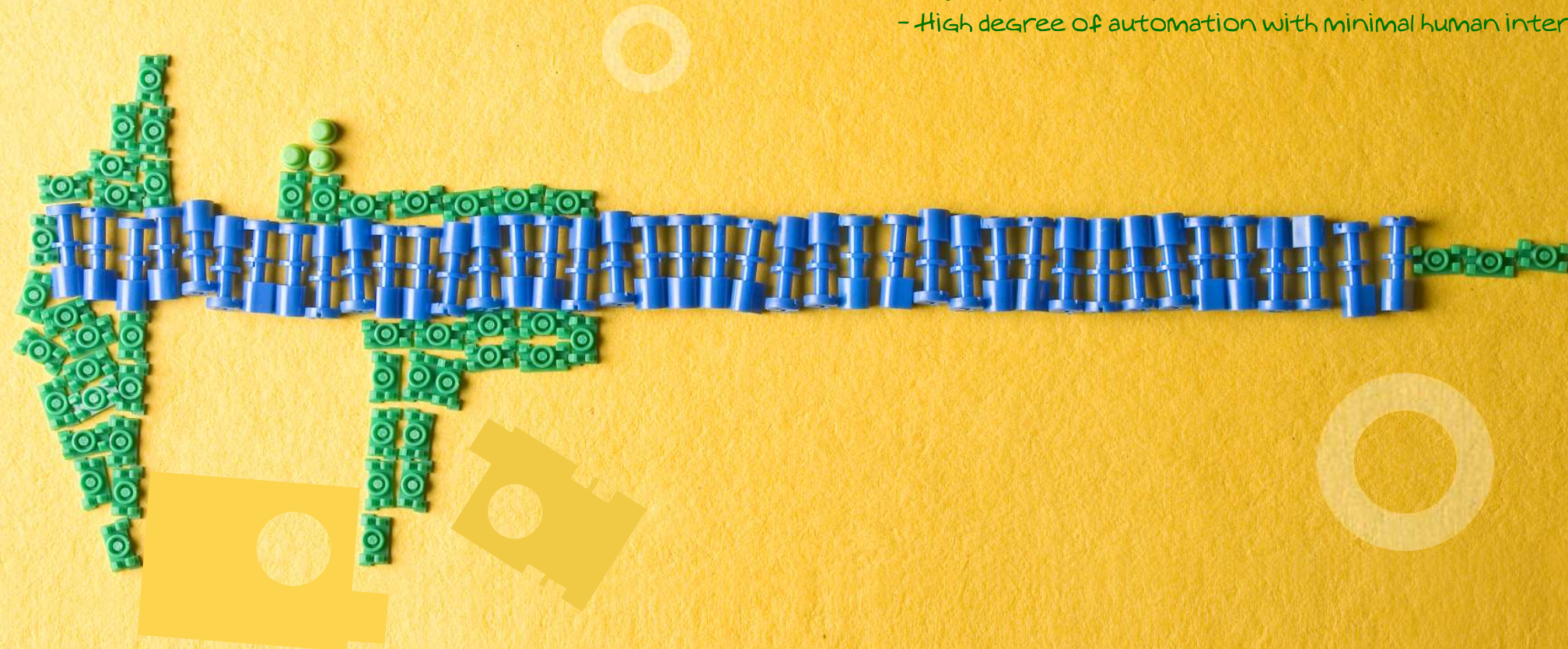
The Tool Room is equipped with the most advanced EDM wire cut machines, EDM small hole drilling machines, CNC Spark Erosion, all of which very smartly create a homogeneous combination with conventional machines needed to ensure the best quality tools and moulds.

Component Manufacturing

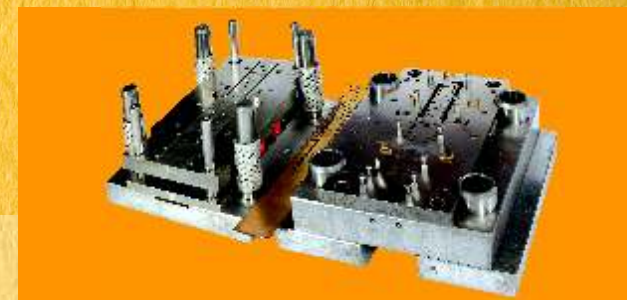
Precision, speed and scalability are the characteristics of our technologically sophisticated component manufacturing facility.

Highlights

- An array of hi-end Injection Moulding machines from ARBURG and ENGEL
- Hi-tech auxiliaries like Mould Temperature Controllers, Vacuum & Desiccant Dryers, Separators, Vacuum Loaders, among others
- High degree of automation with minimal human interference



Capabilities



Product Assembly

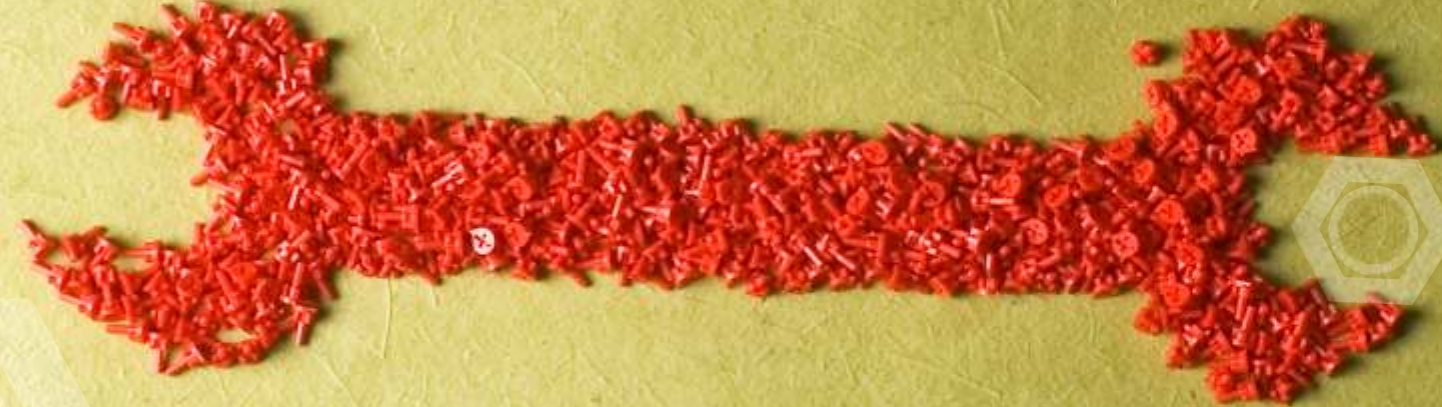
Skilled technicians, backed by the latest software and hardware tools, testing equipments and jigs & fixtures, assemble products in an anti-static, dust-free environment with a semi automated production line.

Quality Management

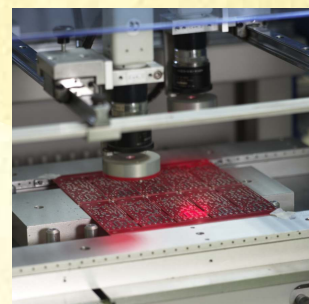
Our well-strategized quality procedures are seamlessly integrated into virtually all areas and processes of production. Futuristic quality planning, process security and process monitoring is achieved through the active involvement of people and continual training. Statistical process control and several quality tools are used for defect prevention.

Warehousing

The smart, hi-tech warehousing solution from Cardex greatly optimizes space and is well equipped to take care of our ever increasing storage needs.



Capabilities





Leadership

GIC and ESBEE are family-owned enterprises, promoted and professionally managed by the Chordiyas.

First generation entrepreneurs Mr. Sohan Chordiya, Mr. Shantilal Chordiya, Dr. Suresh Chordiya and Mrs. Hemalata Chordiya have painstakingly built a strong foundation for the business with their penchant for excellence.

Ajay Chordiya, Vijay Chordiya and Ojas Chordiya make up the second generation of entrepreneurs, who have a zest for smart technology while upholding the core guiding principles of Relationships, Commitment and Excellence.

Today, the seasoned seniors occupy a lofty pedestal from where they mentor the young leaders as they seek new challenges.

People

We believe that an organization is only as good as its people.

Sourcing the best and the brightest professionals in the industry, GIC and ESBEE have put together a motivated, competent team that delivers even in demanding situations.

Our people are, well, our biggest asset.

We implement the best HR practices, offering our teammates a lively work culture that is conducive to their growth and development.

The health and safety of all our colleagues is paramount to us; we adopt the latest industry guidelines to ensure their well-being at the workplace.

Corporate Social Responsibility

Lending a helping hand



Attending school is indeed a luxury for children born into underprivileged families. Either compelled to work at a tender age or left to their own destiny, these children experience a miserable childhood.

As part of our CSR initiatives, we contribute towards making life more meaningful for children in need. Through Sukhlal Bansilal Chordiya Charitable Trust (Regd.) funded by both companies, we extend financial support for their basic education and medical treatment.

A commitment to energy efficiency

Within the organization, we have a firm commitment to energy efficiency.

Sensibly designed workspaces ensure a strong flow of natural daylight, thus reducing electrical consumption. While wastewater recycling is another measure aimed at facilitating conservation.

Our passion for preserving the environmental heritage doesn't stop there. In our endeavour to use clean power, we have installed a couple of windmills near Pune.



Partners in progress

Over the last three decades, we have built long-lasting relationships with our business partners, whose trust in our abilities has been a key growth driver for us.

- L&T
- Gojo, USA
- Deep Sea UK
- Grässlin GmbH, Germany
- Whirlpool, India
- LG, India
- Samsung, India
- Amphenol, Germany

And of course, our competitors too!



GIC

General Industrial Controls Private Limited

T-107, M.I.D.C., Bhosari, Pune 411026 (INDIA)

Tel: +91 20 30680011 / 30 | Fax: +91 20 27122574 | marketing@gicindia.com

www.gicindia.com



TM

Esbee Industrial Combines

switch to perfection

J - 159, M.I.D.C., Bhosari, Pune 411026 (INDIA)

Tel: +91 20 30681018 | Fax: +91 20 27121994 | marketing@esbeeswitches.com

www.esbeeswitches.com